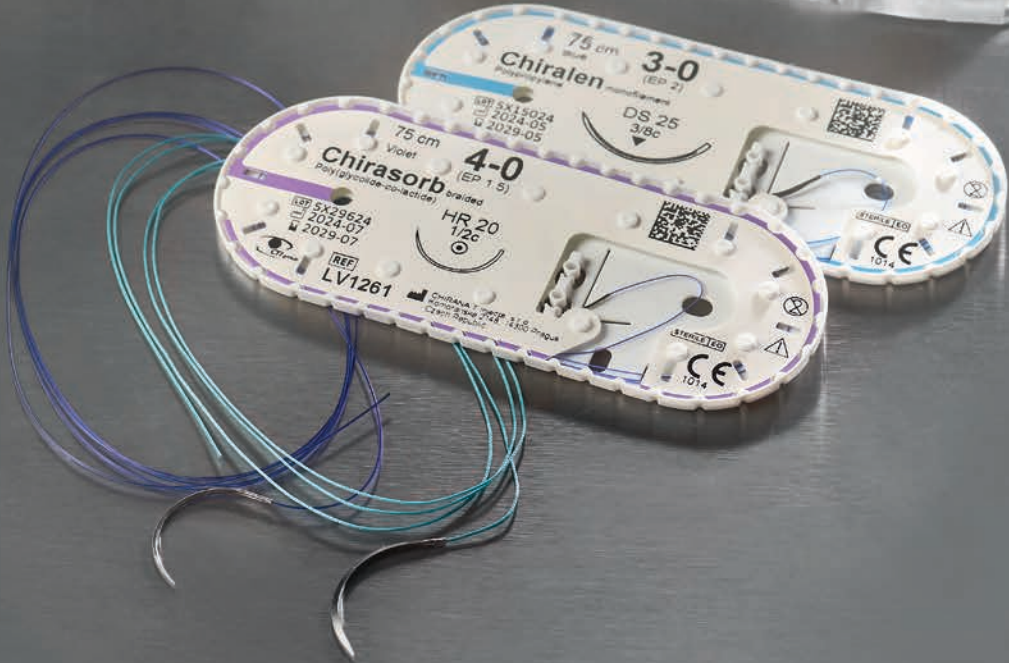
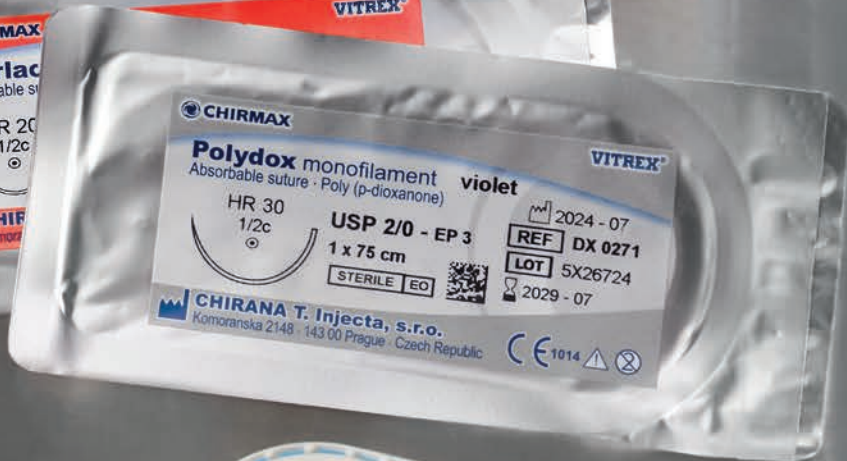
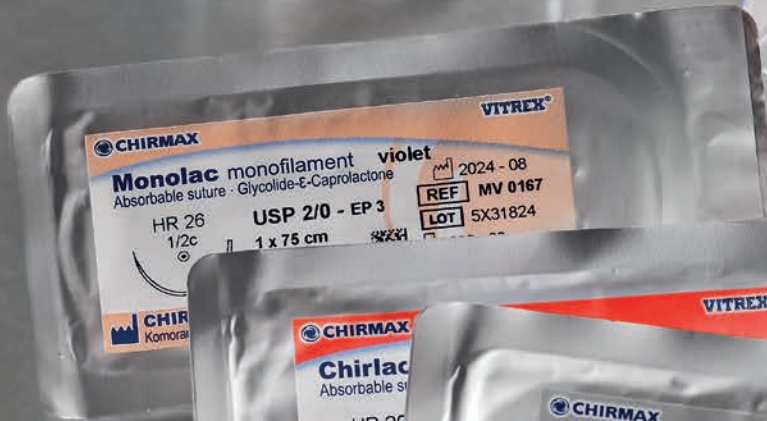


CHIRMAX surgical

Member of Vitrex Medical Group





When experience matters

Our surgical sutures are manufactured in line with state of the art technology. Each individual production process is subject to strict scientific quality control.

Continuous inspection of both mechanical and microbiological characteristics is given top priority. We have more than 90 years of experience in manufacturing surgical sutures.

Our team understands the specific needs of medical professionals by providing them with access to the most complete portfolio of surgical sutures. The result is the current modern product range of absorbable and non-absorbable sutures, which consists of more than 2500 individual surgical suture products.

Production takes place in accordance with GMP guidelines, and a comprehensive quality management system in line with ISO 13485 has been implemented.

All products have been CE marked since 1999.



Surgical Meshes

Surgical Meshes have become standard for the repair of abdominal wall hernias. Surgical mesh is a sterile woven material designed for permanent implantation within the body during open or laparoscopic procedures.

A wide range of mesh implants are available, with two main functions: to stabilize and strengthen soft tissue defects, and to act as a sling to support prolapsed organs and viscera. It is most commonly used in pelvic organ prolapse, urinary stress incontinence and hernia repairs.

CAPROMESH meshes

Partially absorbable

The sterile, partially absorbable, composite mesh is made from two components: one absorbable and one non-absorbable. After absorption of the absorbable part, only the polypropylene mesh remains in the body.

Indication: Capromesh is indicated in the operative treatment of weakened abdominal wall and fascial defects - in particular hernias, the healing of which requires long-term bridging or strengthening of the damaged structures.

CHIRALEN meshes

Non-absorbable

The sterile and surgical meshes are made from undyed polypropylene filaments. The knitted filaments have a smooth and hydrophobic surface, which biologically are absolutely inert. Chiralen meshes are available in different sizes, all offering high strength and high flexibility. Chiralen meshes are available in a weight of approx. 110 g/m² or in the light version with a weight of approx. 30 g/m².

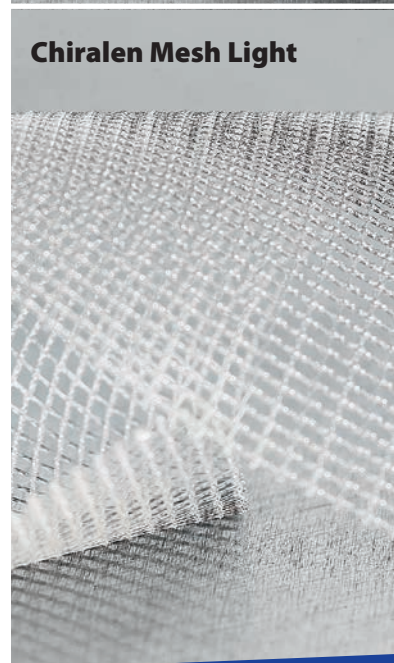
Indication: Chiralen meshes are indicated in the operative treatment of fascial defects, in particular hernias, which require long-term bridging of damaged structures.



Chiralen Mesh



Capromesh



Chiralen Mesh Light

Surgical Sutures - Absorbable threads

CHIRASORB rapid braided

Intended for use in Skin closure, Paediatric surgery, Episiotomies, Circumcision, Closure of oral mucosa and Ophthalmic surgery for conjunctival sutures.



Composition	Colour	Range	Characteristics
Braided and coated suture made from 90% glycolide and 10% L-lactide	Violet and Natural	6/0 to 2 USP	Absorbable, multifilament, coated, synthetic, high tensile strength, reduced capillary effect, short-term healing

CHIRLAC rapid braided

Intended for use in Gynaecology, Skin Closure, Ophthalmic, Odontology and Paediatric surgery.



Composition	Colour	Range	Characteristics
Braided and coated suture made of Polyglycolic acid (PGA)	Violet and Natural	6/0 to 4 USP	Absorbable, multifilament, coated, synthetic, high tensile strength, reduced capillary effect, short-term healing

MONOLAC monofilament

General soft tissue approximation and/or ligation in all specialties, where an absorbable material is indicated.



Composition	Colour	Range	Characteristics
Monofilament suture made of Glycolide and ϵ -caprolactone	Violet and Natural	6/0 to 2 USP	Absorbable, monofilament, synthetic, high tensile strength, excellent handling properties, mid-term healing

CHIRASORB braided

Intended for use in general soft tissue approximation and/or ligation in all specialties, including use in Ophthalmic surgery.



Composition	Colour	Range	Characteristics
Braided and coated suture made from 90% glycolide and 10% L-lactide	Violet and Natural	10/0 to 6 USP	Absorbable, multifilament, coated, synthetic, high tensile strength, reduced capillary effect, mid-term healing

CHIRASORB Plus braided

Antibacterial

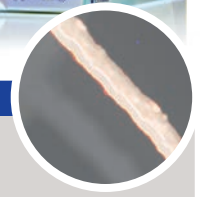
Intended for use in general soft tissue approximation and/or ligation in all specialties.



Composition	Colour	Range	Characteristics
Antibacterial, braided and coated suture made from 90% glycolide, 10% L-lactide and chlorhexidine diacetate	Violet and Natural	5/0 to 4 USP	Absorbable, multifilament, anti-bacterial coating, synthetic, high tensile strength, reduced capillary effect, mid-term healing

CHIRLAC braided

Intended for use in general soft tissue approximation and/or ligation, surgical adaptation of Muscles and Fascia, suturing of Parenchymal organs, Peripheral nerves and ligatures of small vessels and for Intradermal suturing.



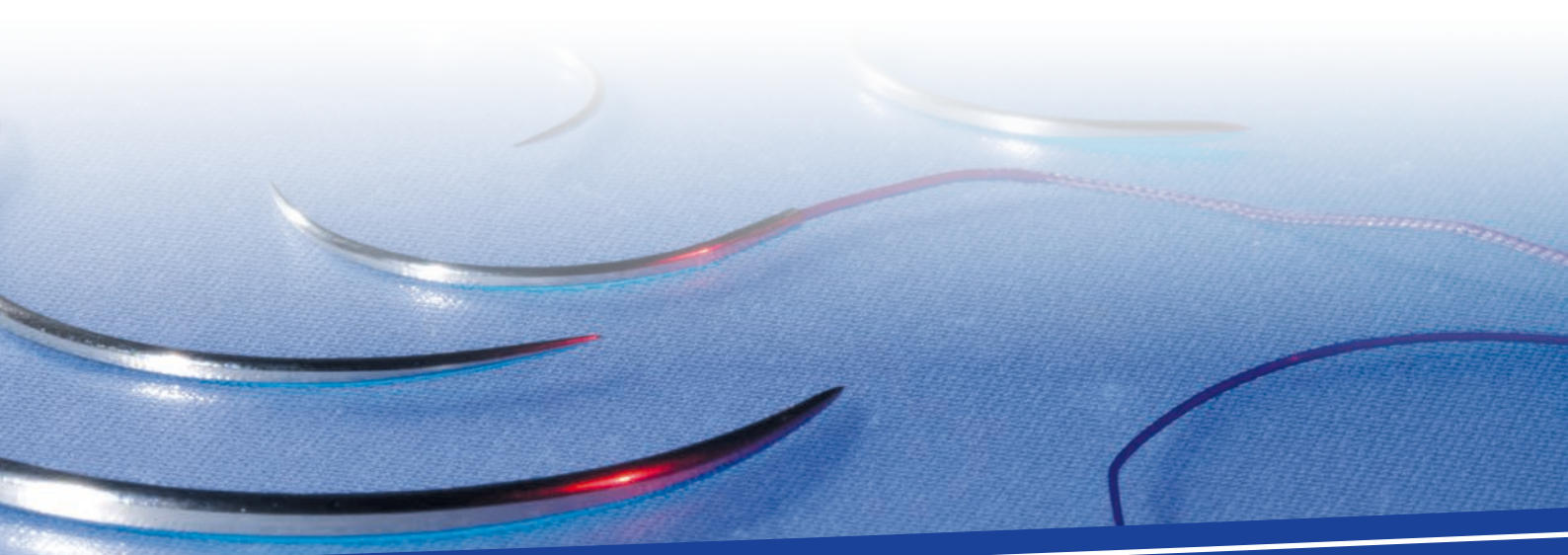
Composition	Colour	Range	Characteristics
Braided and coated suture made of Polyglycolic acid (PGA)	Violet and Natural	9/0 to 6 USP	Absorbable, multifilament, coated, synthetic, high tensile strength, reduced capillary effect, mid-term healing

Polydiox monofilament

Intended for use in general soft tissue approximation, Orthopaedics, Fascia Closure, Urology, Gynaecology and Plastic surgery. Recommended for long-term healing.



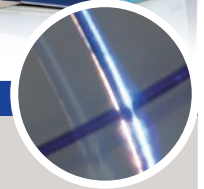
Composition	Colour	Range	Characteristics
Monofilament suture made of Poly-p-dioxanone	Violet and Natural	7/0 to 4 USP	Absorbable, monofilament, synthetic, high tensile strength, excellent knotting properties, long-term healing



Surgical Sutures - Non-absorbable threads

CHIRAFLON monofilament

Intended for use in all surgical specialities, especially Orthopaedic, Traumatology (tendons), Plastic and Ophthalmic surgery (optimal, temporary, easily, removable suture).



Composition	Colour	Range	Characteristics
Monofilament suture made of Polyvinylidene Fluoride (PVDF) - similar to Teflon	Blue	8/0 to 3 USP	Non-absorbable, monofilament, synthetic, no capillary effect, very smooth, excellent knotting properties, easy to handle, physiologically inert

Chiralen monofilament

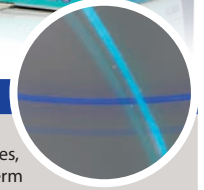
Intended for use in all surgical specialities, especially Cardiovascular, Plastic, Reconstructive, Ophthalmic, Orthopaedics and Traumatology (tendons).



Composition	Colour	Range	Characteristics
Monofilament suture made of Polypropylene	Blue and Black	10/0 to 2 USP	Non-absorbable, monofilament, synthetic, no capillary effect, smooth, non-porous surface, suitable for stitches in infected wounds

SILON monofilament

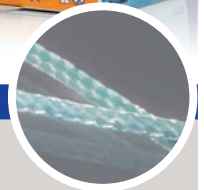
Intended for use in Plastic and General surgery and wherever suturing the skin.



Composition	Colour	Range	Characteristics
Monofilament suture made of Polyamide 6	Blue and Black	10/0 to 2 USP	Non-absorbable, monofilament, synthetic, very smooth, excellent knotting properties, easy to handle, loss of tensile strength after long-term implantation

TERVALON braided

Intended for use whenever non-absorbability and low friction passage through tissues are needed. It is especially useful in suturing Tendons, Schwann sheaths and skin in Plastic and Reconstructive surgery.



Composition	Colour	Range	Characteristics
Braided and coated suture made of Polyester	Green and White	6/0 to 6 USP	Non-absorbable, multifilament, synthetic, high tensile strength, no capillary effect, well tolerated by the tissue, low friction

SILON braided

Intended for use in Skin Closure, Subcutaneous tissue, Transversely cut muscles, Fascia, Peritoneum, Gastrointestinal Tract and Blood vessels ligation.



Composition	Colour	Range	Characteristics
Braided suture made of Polyamide	White and Black	5/0 to 5 USP	Non-absorbable, multifilament, synthetic, high tensile strength, excellent knotting properties, loss of tensile strength after long-term implantation

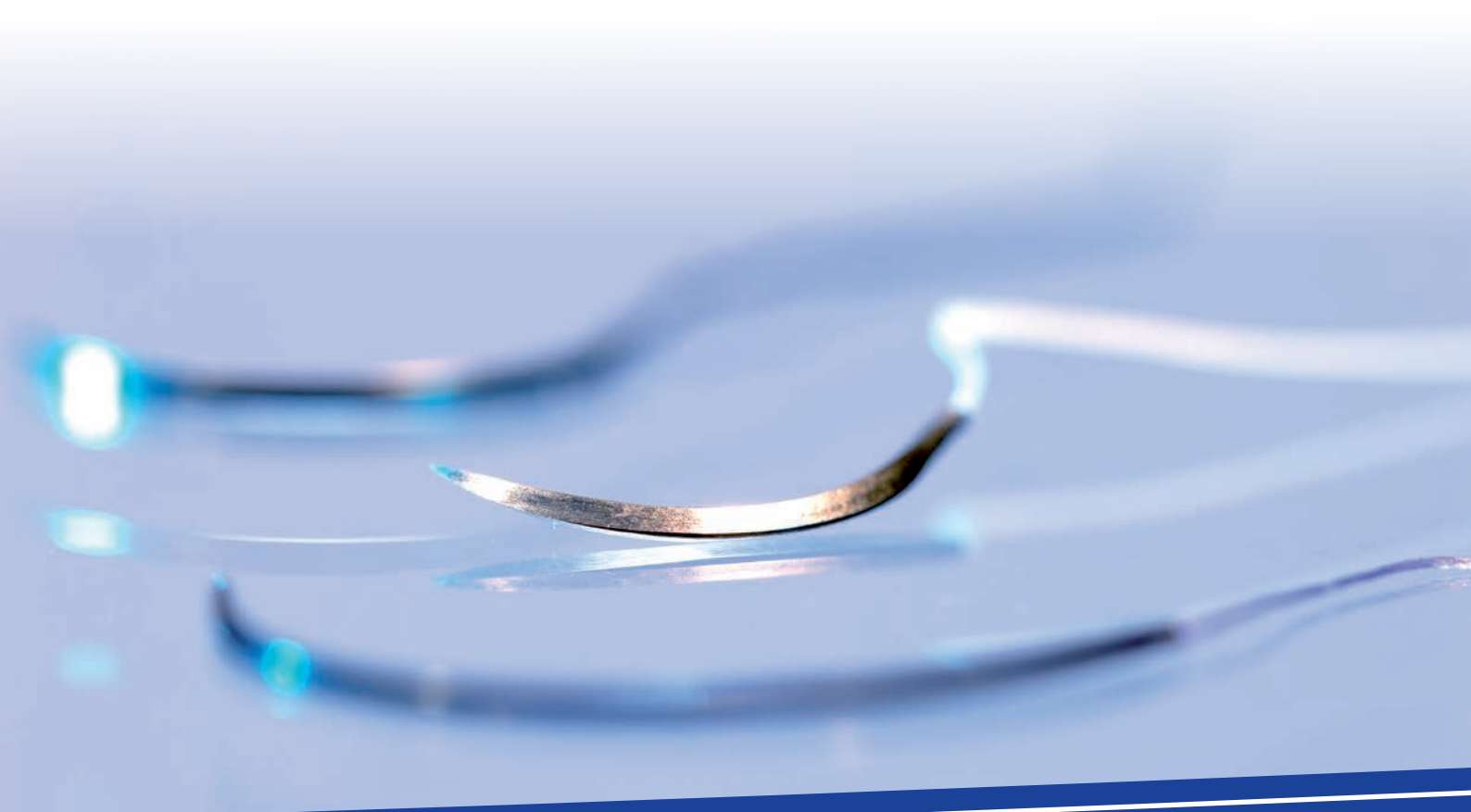
Silk braided

Intended for use in Skin closure, Subcutaneous tissue, Fascia, Peritoneum, Plastic surgery, Gynaecology and the organs of the Gastrointestinal tract.



Composition	Colour	Range	Characteristics
Braided and coated suture made of Silk	Black	9/0 to 5 USP	Non-absorbable, multifilament, synthetic, no capillary effect, loss of tensile strength after long-term implantation

For more information about sutures and meshes, and catalogue of full product range, please contact us.





VMG

Vitrex Medical Group



VMG Vitrex Medical Group

CTI group has per November 2024 been renamed to “VMG Vitrex Medical Group”. The strategy of the group remains the same - to develop and distribute healthcare products of great quality. The vision of the group has changed and instead of being a group of individual companies, the vision is to create “one team” by migrating the companies’ in terms of strategy, values, departments, processes, know-how and capabilities.

As VMG Vitrex Medical Group, we strive to be the leading European medical device & IVD manufacturing group, developing, producing and supplying high-quality healthcare products and tailor-made med-tech solutions that embody special expertise, reliability, trustworthiness and are made with respect and dedication to enhance the life of healthcare professionals and their patients worldwide.

Manufacturing sites

CHIRANA T. Injecta, Slovakia

CHIRANA T. Injecta is a global, state of the art manufacturer of healthcare products, which was founded in 1935.

In 1947 CHIRANA T. Injecta started manufacturing glass syringes and they have ever since focused on development and production of high quality, disposable syringes, needles and metal tubes for the healthcare sector and med-tech companies.

VITREX Medical, Denmark

Vitrex Medical was founded in 1967, where they started producing resistors for televisions, which later on evolved to producing capillary tubes to transport liquids.

With more than 50 years of experience Vitrex Medical has become the largest manufacturer of capillary tubes in the world today by developing equipment, establishing technologies, and optimizing production processes.

CHIRANA T. Injecta, Czech Republic

CHIRANA T. Injecta was founded in 1930. Since the early 1990s they have made substantial investments in upgrading the production resources, enabling the company to offer products in a unique quality.

Their more than 90 years of experience with manufacturing sutures has resulted in top priority within quality control, product development and sutures manufactured in line with state of the art technology.

VITREX lab

Member of Vitrex Medical Group

New and higher standards in the diagnostic laboratory field require an improved performance of laboratory products. Vitrex Lab products and accessories are designed to fulfill the requirements of lab procedures, patient's comfort and user's safety. In addition to the comprehensive, standardized range of products, we have developed a large variety of specialized products.

Range of products:

- Capillary tubes and Haematocrit tubes
- Micro-pipettes
- Safety lancets
- Vacuum tubes and Blood collection needles
- Alcohol swabs and Safety containers

VITREX diabetes

Member of Vitrex Medical Group

Diabetes is a huge global challenge. There are 415 million people with diabetes worldwide and by 2040 every tenth person is expected to have diabetes. An effective treatment also involves as pleasant a treatment as possible. We aim to deliver quality healthcare solutions for diabetics to meet the demand of both professionals and individual patients. All people are different, so it requires a carefully selected portfolio of products.

Range of products:

- Pen needles
- Dual safety pen needles
- Diabetic lancets
- Insulin syringes

CHIRANA injecta

Member of Vitrex Medical Group

Drug delivery products are used for medical purposes with the intention of diagnosing, preventing or treating a disease or sickness. These products contribute to help improving the quality of life for patients. We offer a comprehensive range of high-quality drug delivery products for the healthcare sector, which vary in intended use and indications for use.

Range of products:

- 2-part and 3-part syringes
- Perfusion syringes
- Hypodermic needles
- IV administration products
- Examination products

CHIRMAX surgical

Member of Vitrex Medical Group

For different specialties, procedures and tissue types within human, veterinary and dental market, Chirmax Surgical provides state of the art surgical sutures and meshes to improve the lives of patients worldwide. Our surgical sutures are manufactured in Europe and each individual production process is subject to strict scientific quality control.

Range of products:

- Surgical sutures, ligatures and meshes
- Veterinary bottles and eye needles
- Microsurgery and cardiovascular sutures
- Antibacterial sutures

CHIRANA med-tech

Member of Vitrex Medical Group

Our CDMO solutions enables companies to leverage our advanced manufacturing capabilities to produce high-quality medical devices under their own brand. We offer versatile capabilities and technologies within glass, plastic, metal and wire processing as well as plastic component molding, assembly, packing, sterilization and finishing.

Examples of CDMO projects:

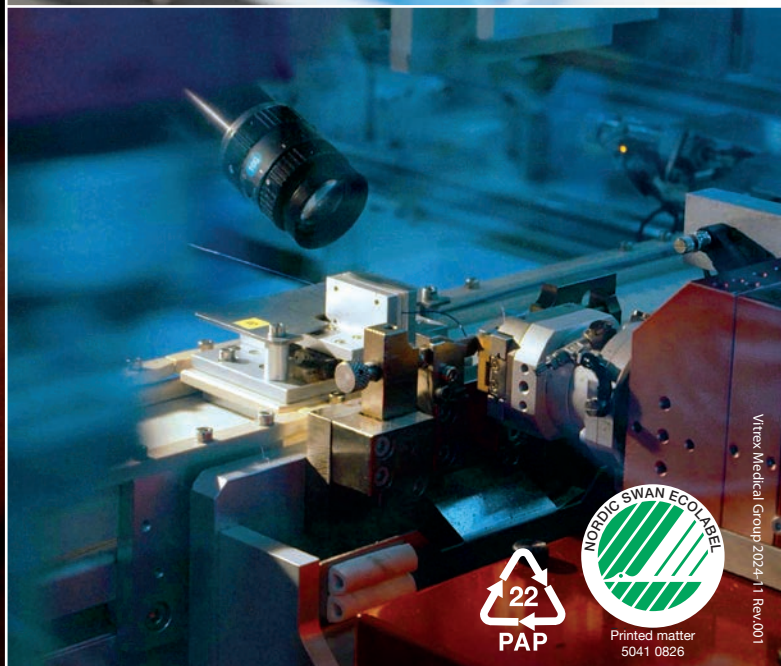
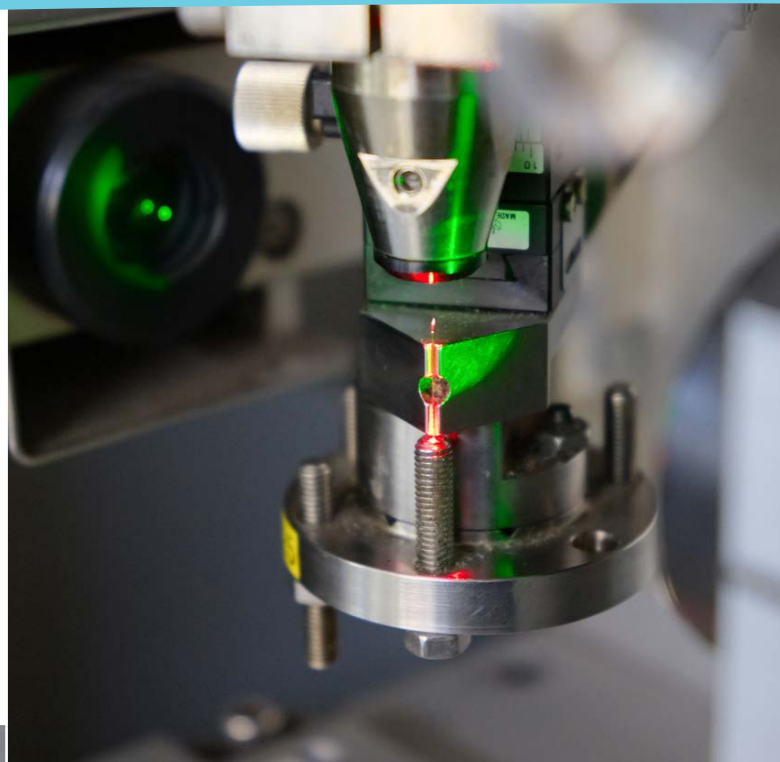
- Specialty drug delivery cannulas
- Pre-fill syringe cannulas
- Plunger rod for PFS
- Capillary tubes for IVF procedures
- Medical procedure kits for e.g. vaccination



CHIRANA T. Injecta, a.s.
Nám. Dr. Alberta Schweitzera 194
916 01 Stará Turá, Slovakia
Phone: +421 32 7709 901

Vitrex Medical A/S
Vasekaer 6-8
2730 Herlev, Denmark
Phone: +45 4494 7011

CHIRANA T. Injecta, s.r.o.
Komořanská 2148
143 00 Praha 4
Czech Republic
Phone: +420 241 097 904



Vitrex Medical Group 2024-11 Rev.001

