



 **VITREX** diabetes  
Member of Vitrex Medical Group





## Vitrex Soft Blood Glucose Lancets

Vitrex Soft Blood Glucose Lancets are intended for blood glucose measurement. The soft lancets are universal and compatible with most lancing devices especially Vitrex Compact Eject. The range includes standard soft lancets and siliconized soft lancets available in different sizes.

### GOOD BLOOD FLOW

Triple ground needle point.

### VERSATILE

Fit most commonly used lancing devices including the Vitrex Compact Eject lancing device.

### PATIENT SAFETY:

Single-use only. Sterilised by gamma irradiation.

### CONVENIENT

Boxes have dispensing feature.

### NEW SILICONIZED NEEDLE

For less pain and smoother penetration.

### Technical Specifications

Colour Code	Specification	Pcs./Box	Article No.
Light blue	23G (0.64 mm)	200	351213
Red	28G (0.36 mm)	200	352213
Green	30G (0.30 mm)	200	354213
Dark blue	32G (0.26 mm)	200	357213

Shelf life 5 years

### Technical Specifications Siliconized Needles

Colour Code	Specification	Pcs./Box	Article No.
Red	28G (0.36 mm)	200	352413
Green	30G (0.30 mm)	200	354413

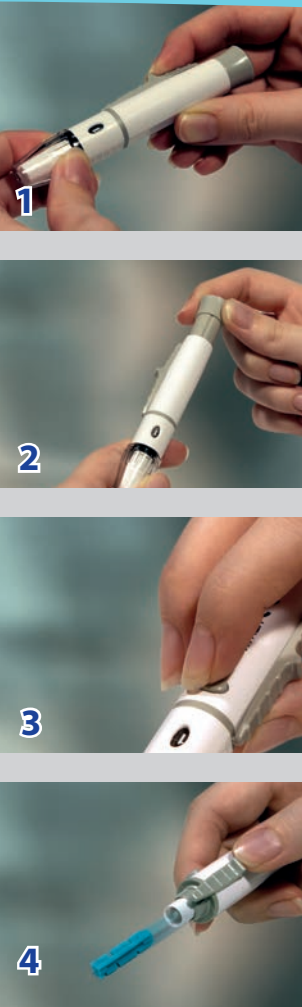
Shelf life 5 years



Transit packaging

Pallet

**Packaging:**  
 Primary packaging: 200 pcs.  
 Secondary packaging: 2,000 pcs.  
 Transit packaging: 20,000 pcs.  
 Pallet: 480,000 pcs.



## Recommended use

### 1. Variable penetration

Dial the appropriate depth on the device between 1 (min.) and 5 (max.).

### 2. Simple and quick activation and reactivation

Pull back the grey slider to activate the mechanism.

### 3. Instant operation

Depress the grey button to operate the device.

### 4. Lancet removal

Simple and reliable lancet ejection.

## Vitrex Compact Eject

Vitrex Compact Eject is a lancing device with a push button ejection. The device is clear adjustable with clear fixed end caps designed for Alternate Site Testing (AST).

### VERSATILE

Suitable for use with Vitrex Soft Lancets and other most commonly used lancet brands.

### VARIABLE PENETRATION

Nine depth settings from 1 to 5.

### CONVENIENT

Simple and quick activation, reactivation and non-touch lancet removal.

## Technical Specifications

Product	Description	Packaging	Article No.
Vitrex Compact Eject	9-step adjustable depth	Clear plastic sleeve only	369613

Shelf life 5 years





## Medoject Fine® Pen Needles

Medoject Fine Pen Needles are made of polypropylene hub and stainless steel tube. They are intended for Insulin application via most Insulin pens. The needles are sterile and individually packed.

### COMFORTABLE INJECTION

European, premium needle quality, triple beveled tip and precision lancet point grinding.

### THIN WALL TECHNOLOGY

Ensures optimal insulin flow.

### SILICONIZED NEEDLE

Minimizes irritation and gives a smooth penetration.

### SHORT NEEDLES

Reduce risk of a painful injection into the muscle.

### VERSATILE

Fit most commonly used insulin pens.

### COLOUR-CODING

Simple identification of different needle lengths.

### FDA CLEARED

## Technical Specifications

Colour Code	Specification	Article No.
Yellow	29G x 10 mm	CHPN2910
Pink	29G x 12.7 mm	CHPN29127
Dark blue	30G x 6 mm	CHPN3006
Light blue	30G x 8 mm	CHPN3008
Green	31G x 4 mm	CHPN3104
Dark violet	31G x 5 mm	CHPN3105
Dark blue	31G x 6 mm	CHPN3106
Light blue	31G x 8 mm	CHPN3108
Green	32G x 4 mm	CHPN3204
Dark violet	32G x 5 mm	CHPN3205
Dark blue	32G x 6 mm	CHPN3206
Green	33G x 4 mm	CHPN3304 *

MEDOJECT Fine Pen Needles are available in many sizes. For more information Contact Sales Department.

Shelf life 5 years

\* Not FDA cleared.

**Packaging:**  
 Primary packaging: 100 pcs.  
 Transit packaging: 2,000 pcs.  
 Pallet: 160,000 pcs.







**NEW**

## Vitrex Safety Pen Needles With Dual Automatic Protective Shields

Vitrex Safety Pen Needles are intended for a safe and simple insulin injection via most insulin pens. The application is the same as normal insulin pens, but they offer an automatic double protection without extra operations after using. The coloured indicator shields in the front and back-end provide a visual, physical and audible confirmation of safety. The needles are sterile and individually packed.

### SAFETY FUNCTION

Coloured automatic safety shields on front and back-end providing double protection after using.

### COMFORTABLE INJECTION

Triple sharpened needle and top lubrication technology, which offers minimum penetration force.






### SIMPLE AND SAFE APPLICATION

Easy to trigger the safety function after injection. Same application as normal pen needles, but with a safety function both blocking top and bottom needle after use.

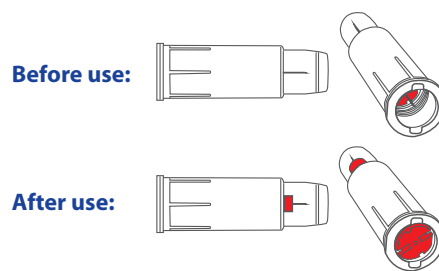
### VERSATILE

Uniform hub screw which fits most commonly used insulin pens.

### Technical Specifications

Colour Code		Specification	Article No.
Purple		30G x 5 mm	531113
Dark blue		30G x 8 mm	531213
Yellow		31G x 5 mm	531313
Orange		31G x 6 mm	531413
Green		32G x 4 mm	531513

Shelf life 5 years



**Packaging:**  
Primary packaging: 100 pcs.  
Transit packaging: 800 pcs.  
Pallet: 57,600 pcs.



## Chirana® Insulin and Tuberculin Syringes

Chirana Insulin and Tuberculin syringes are with integrated needle for single use. The needle cap is made of LATEX-FREE rubber gasket. The syringes are individually packed in boxes of 100 pcs. They are pyrogen-free and non-toxic.

**USER CONVENIENCE:** Needle permanently fixed to syringe body.

**USER SAFETY:** Integrated needle cap.

**COMFORT:** Grinded, precision lancet point and silicone treated tip for smooth penetration.

**PATIENT SAFETY:** Single-use only. Sterilised by ETO. Dead space is minimized to reduce waste and transmission of infectious agents. The dead space does not exceed the limits (EN ISO 8537:2016, art. 5.11.1).

**FDA CLEARED \***



**Packaging:**  
 Primary packaging: 100 pcs.  
 Secondary packaging: 2,000 pcs.  
 Pallet: 48,000 pcs.

\* FDA clearance for Insulin syringes.

### Technical Specifications

Type	Vol. ml.	Needle	Size Metric	Article No:
Tuberculin	1	29G x 1/2"	12.7 mm	CHTUB0129
Tuberculin	1	Luer		CHTUB01
Insulin U 40	1	29G x 1/2"	12.7 mm	CHINS4129
Insulin U 100	1	27G x 1/2"	12.7 mm	CHINS0127
Insulin U 100	1	29G x 5/16"	8 mm	CHINS01298
Insulin U 100	1	29G x 1/2"	12.7 mm	CHINS0129
Insulin U 100	1	30G x 1/2"	12.7 mm	CHINS0130
Insulin U 100	1	30G x 5/16"	8 mm	CHINS01308
Insulin U 100	1	31G x 4/16"	6 mm	CHINS01316
Insulin U 100	1	31G x 5/16"	8 mm	CHINS01318
Insulin U 100	1	Luer		CHINS01
Insulin U 100	0.5	29G x 1/2"	12.7 mm	CHINS00529
Insulin U 100	0.5	30G x 1/2"	12.7 mm	CHINS00530
Insulin U 100	0.5	30G x 5/16"	8 mm	CHINS005308
Insulin U 100	0.5	31G x 5/16"	8 mm	CHINS005318
Insulin U 100	0.5	31G x 4/16"	6 mm	CHINS005316
Insulin U 100	0.3	29G x 1/2"	12.7 mm	CHINS00329
Insulin U 100	0.3	30G x 1/2"	12.7 mm	CHINS00330
Insulin U 100	0.3	31G x 5/16"	8 mm	CHINS003318
Insulin U 100	0.3	31G x 4/16"	6 mm	CHINS003316

CHIRANA Syringes are available in many sizes.  
 For more information Contact Sales Department.

Shelf life 5 years





# VMG

## Vitrex Medical Group



## VMG Vitrex Medical Group

CTI group has per November 2024 been renamed to “VMG Vitrex Medical Group”. The strategy of the group remains the same - to develop and distribute healthcare products of great quality. The vision of the group has changed and instead of being a group of individual companies, the vision is to create “one team” by migrating the companies’ in terms of strategy, values, departments, processes, know-how and capabilities.

As VMG Vitrex Medical Group, we strive to be the leading European medical device & IVD manufacturing group, developing, producing and supplying high-quality healthcare products and tailor-made med-tech solutions that embody special expertise, reliability, trustworthiness and are made with respect and dedication to enhance the life of healthcare professionals and their patients worldwide.

## Manufacturing sites

### CHIRANA T. Injecta, Slovakia

CHIRANA T. Injecta is a global, state-of-the-art manufacturer of healthcare products, which was founded in 1935.

In 1947 CHIRANA T. Injecta started manufacturing glass syringes and they have ever since focused on development and production of high-quality, disposable syringes, needles and metal tubes for the healthcare sector and med-tech companies.

### VITREX Medical, Denmark

Vitrex Medical was founded in 1967, where they started producing resistors for televisions, which later on evolved to producing capillary tubes to transport liquids.

With more than 50 years of experience Vitrex Medical has become the largest manufacturer of capillary tubes in the world today by developing equipment, establishing technologies, and optimizing production processes.

### CHIRANA T. Injecta, Czech Republic

CHIRANA T. Injecta was founded in 1930. Since the early 1990s they have made substantial investments in upgrading the production resources, enabling the company to offer products in a unique quality.

Their more than 90 years of experience with manufacturing sutures has resulted in top priority within quality control, product development and sutures manufactured in line with state-of-the-art technology.



## **VITREX lab** Member of Vitrex Medical Group

New and higher standards in the diagnostic laboratory field require an improved performance of laboratory products. Vitrex Lab products and accessories are designed to fulfill the requirements of lab procedures, patient's comfort and user's safety. In addition to the comprehensive, standardized range of products, we have developed a large variety of specialized products.

### **Range of products:**

- Capillary tubes and Haematocrit tubes
- Micro-pipettes
- Safety lancets
- Vacuum tubes and Blood collection needles
- Alcohol swabs and Safety containers

## **VITREX diabetes** Member of Vitrex Medical Group

Diabetes is a huge global challenge. There are 415 million people with diabetes worldwide and by 2040 every tenth person is expected to have diabetes. An effective treatment also involves as pleasant a treatment as possible. We aim to deliver quality healthcare solutions for diabetics to meet the demand of both professionals and individual patients. All people are different, so it requires a carefully selected portfolio of products.

### **Range of products:**

- Pen needles
- Dual safety pen needles
- Diabetic lancets
- Insulin syringes

## **CHIRANA injecta** Member of Vitrex Medical Group

Drug delivery products are used for medical purposes with the intention of diagnosing, preventing or treating a disease or sickness. These products contribute to help improving the quality of life for patients. We offer a comprehensive range of high-quality drug delivery products for the healthcare sector, which vary in intended use and indications for use.

### **Range of products:**

- 2-part and 3-part syringes
- Perfusion syringes
- Hypodermic needles
- IV administration products
- Examination products

## **CHIRMAX surgical** Member of Vitrex Medical Group

For different specialties, procedures and tissue types within human, veterinary and dental market, Chirmax Surgical provides state of the art surgical sutures and meshes to improve the lives of patients worldwide. Our surgical sutures are manufactured in Europe and each individual production process is subject to strict scientific quality control.

### **Range of products:**

- Surgical sutures, ligatures and meshes
- Veterinary bottles and eye needles
- Microsurgery and cardiovascular sutures
- Antibacterial sutures

## **CHIRANA med-tech** Member of Vitrex Medical Group

Our CDMO solutions enables companies to leverage our advanced manufacturing capabilities to produce high-quality medical devices under their own brand. We offer versatile capabilities and technologies within glass, plastic, metal and wire processing as well as plastic component molding, assembly, packing, sterilization and finishing.

### **Examples of CDMO projects:**

- Specialty drug delivery cannulas
- Pre-fill syringe cannulas
- Plunger rod for PFS
- Capillary tubes for IVF procedures
- Medical procedure kits for e.g. vaccination



**CHIRANA T. Injecta, a.s.**  
Nám. Dr. Alberta Schweitzera 194  
916 01 Stará Turá, Slovakia  
Phone: +421 32 7709 901

**Vitrex Medical A/S**  
Vasekaer 6-8  
2730 Herlev, Denmark  
Phone: +45 4494 7011

**CHIRANA T. Injecta, s.r.o.**  
Komořanská 2148  
143 00 Praha 4  
Czech Republic  
Phone: +420 241 097 904

